



Bathtub/Whirlpool

42" x 60" x 21"

Above Floor Rough

Product Features

- + Factory plumbed, ready to install.
- + Can be installed in an island or alcove.
- + Pumps up to 60 gallons per minute with a 3/4 hp motor.
- + Eight jets, four scalloped pulse jets and four mini pulse jets.
- + High gloss acrylic surface for a brighter shine and better wear resistance.
- + Easy to install for both new construction and remodel products.
- + Covered with a protective film to maintain finish during installation.
- + Cardboard insert available for added protection. (Standard on whirlpools)
- + Factory installed inline heater available.
- + Made in USA.

Color Options

(color code replaces "xx" in SKU)

- | | |
|-----------|-------------------|
| 01 White | 09 Biscuit |
| 02 Almond | 22 Black |
| 07 Silver | 30 Brushed Nickel |

Inline Heater

Factory Installed Add "H" to end of SKU.
Sold Separately HTR01

Trim Options for jets

(color code replaces "yy" in SKU)

- | | |
|------------------|-----------|
| 00 Color Matched | 01 Chrome |
|------------------|-----------|

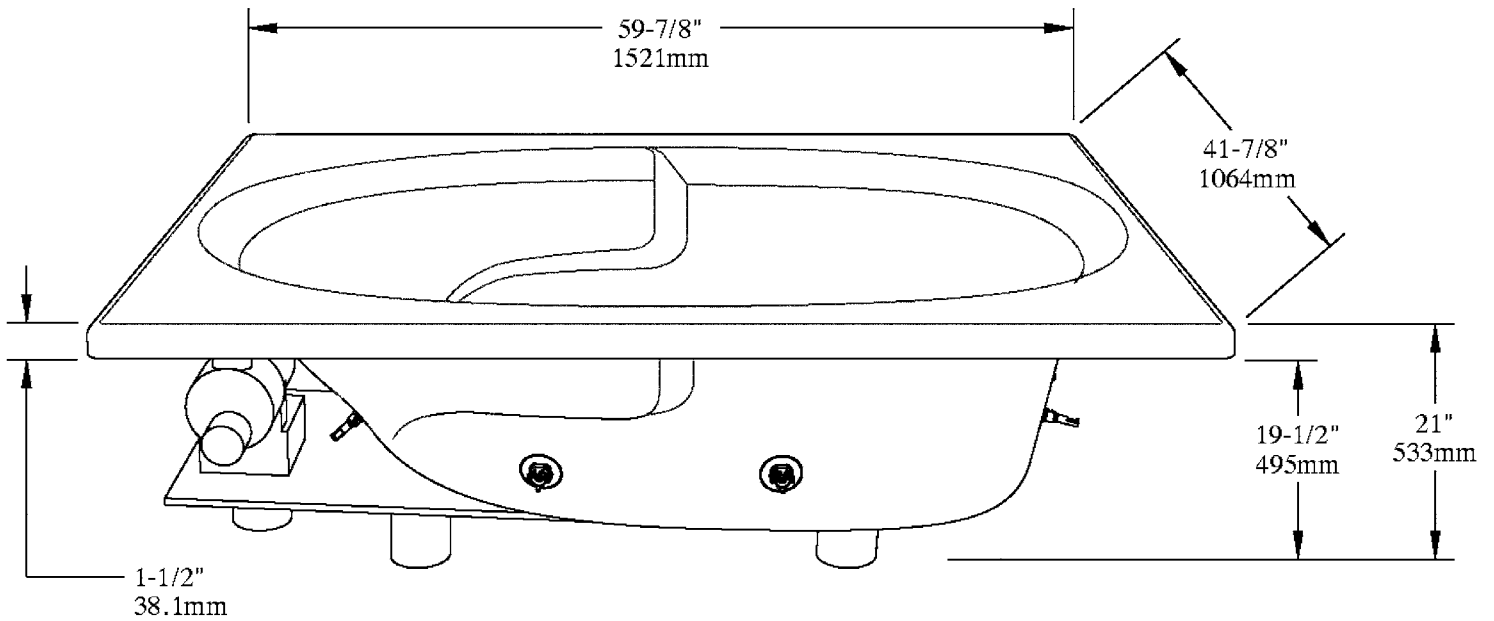
Valente

SKUs

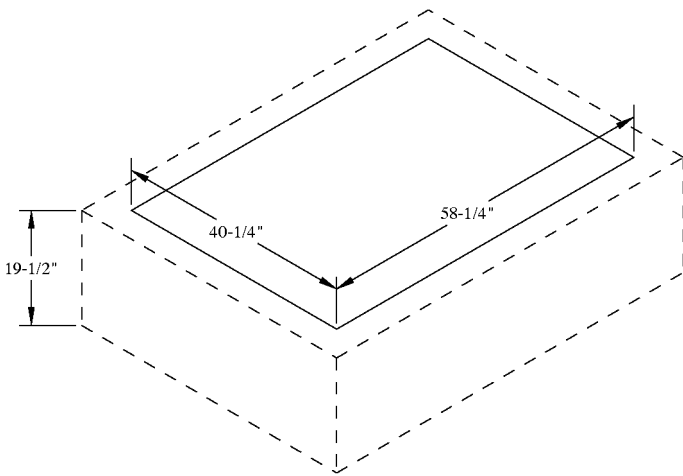
42" x 60" x 21" whirlpool	LSWLDLHxx4260-yy
42" x 60" x 21" bathtub	LSTLDxx4260

Also Available SKUs

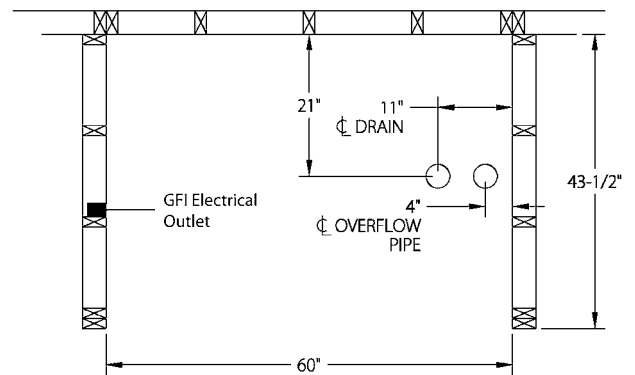
32" x 60" x 21" whirlpool	LSWLDHxx3260-yy
42" x 72" x 21" whirlpool	LSWLDLHxx4272-yy
42" x 72" x 21" bathtub	LSTLDxx4272
60" x 60" x 21" Claudio whirlpool	LSWLD_Hxx6060C-yy
60" x 60" x 21" bathtub	LSTLDxx6060



Subject to manufacturing tolerance of [+] or [-] 1/8"



Specific island construction may vary, as long as cutout size and depth are correct. (Tub weight must be supported by feet).



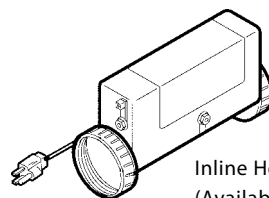
RH Installation shown - reverse for LH installation. Tile Flange Kit available for alcove installation.

Access to pump/motor required for whirlpool installation. 20 amp GFI outlet required.

⊠ = Stud location

Color Options

- 01 White
- 02 Almond
- 07 Silver
- 09 Biscuit
- 22 Black
- 30 Brushed Nickel



Inline Heater
(Available factory installed or sold separately, see reverse)

Lyons[®]
The finishing touch.

Design and features may change.
Colors shown in ink may be variations in color fidelity of actual product.
Complies with ANSI Z124.1 2005 and CAN/CSA-B45.
Printed in U.S.A.
4200-00034 03/2008



LYONS INDUSTRIES, INC.
P.O. Box 88, Dowagiac, MI 49047
phone (800) 458-9036 fax (269) 782-5159
lyonsindustries.com
e-mail lyonsind@lyonsindustries.com